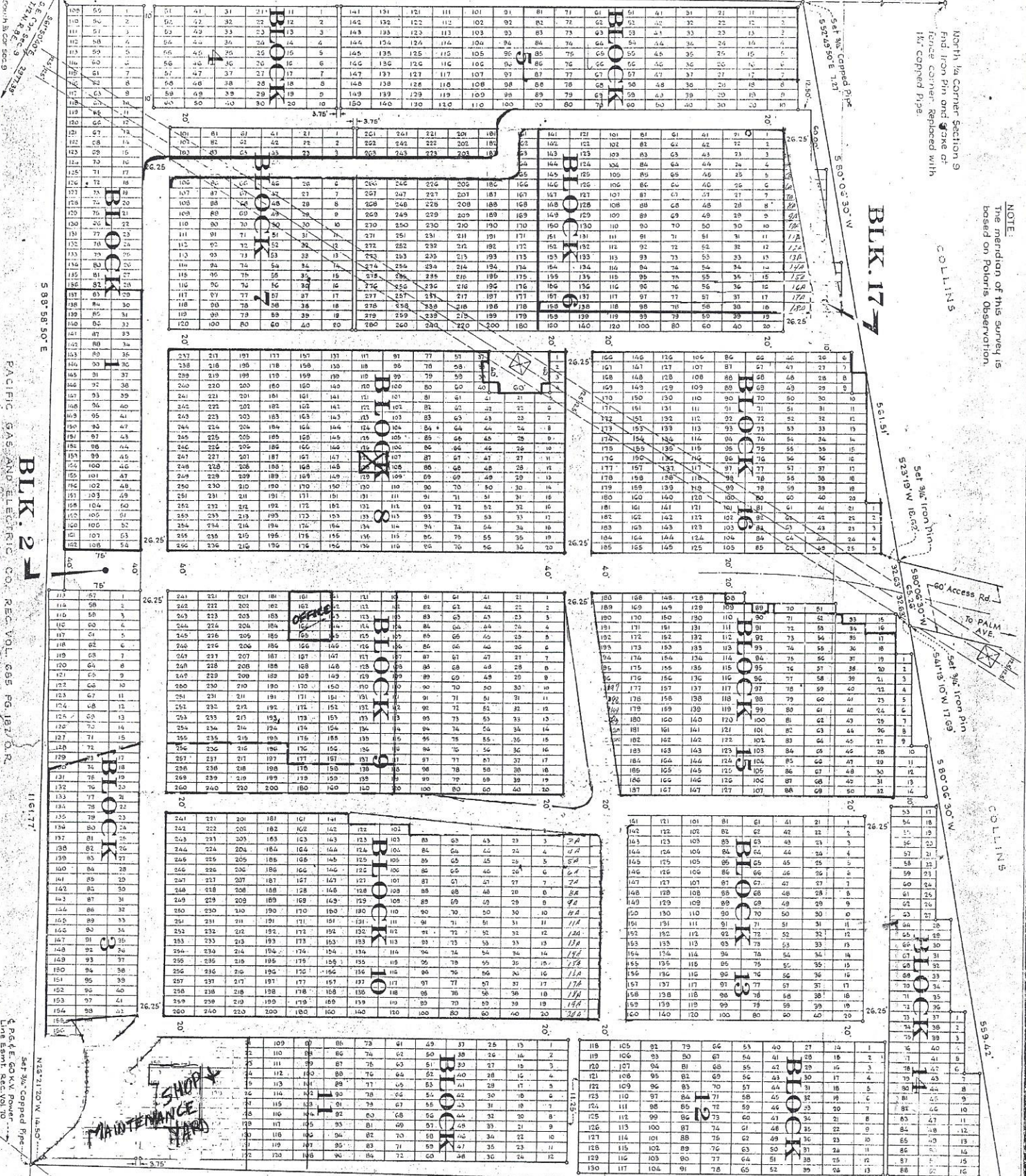


Find Brass Copied Pipe  
 50' 43' 50" W  
 175' 10" N  
 175' 10" S  
 175' 10" E

Find 1 1/2" Iron Pipe  
 N 64° 13' 50" E 16.74'



NOTE:  
 The meridian of this survey is based on Polaris Observation

North 1/4 Corner Section 9  
 Find Iron Pin and Stake or  
 fence corner. Replaced with  
 1 1/2" Copied Pipe

COLLINS

BLK. 17

Set 3/4" Iron Pin  
 52' 5" W 18.62'

Set 3/4" Iron Pin  
 54' 13" W 11.69'

COLLINS

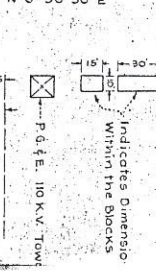
Set 3/4" Copied Pipe  
 520.51' W 23.44'

BLK. 2 SURVEYS - PG.

Find 1 1/2" Iron Pipe  
 50' 43' 50" W  
 175' 10" N  
 175' 10" S  
 175' 10" E

Find Brass Copied Pipe  
 50' 43' 50" W  
 175' 10" N  
 175' 10" S  
 175' 10" E

RECORD OF SURVEY  
 FOR  
 AUBURN CEMETERY D  
 PORTION SECTION 9, T12N, R. 10E  
 SCALE: 1"=60'  
 J.N. ANDREGG L.S. 251B



LEGEND  
 Indicates 1/2" Iron Pin  
 Unless Otherwise Indicated  
 Indicates Dimension Within the Docks

Filed for record by  
 N. G. A. 1962, at 40  
 post-October 1, 1962,  
 of surveys of Auburn Ce  
 quest of the Auburn Ce  
 rity, No. 19,332 Fee  
 50' 43' 50" W  
 175' 10" N  
 175' 10" S  
 175' 10" E

This map has been  
 for conformance with  
 of Chapter 15 of Divisio  
 Business and Professi  
 2024 of Measure 5000

COUNTY OF  
 PLACER COUNTY  
 CALIFORNIA

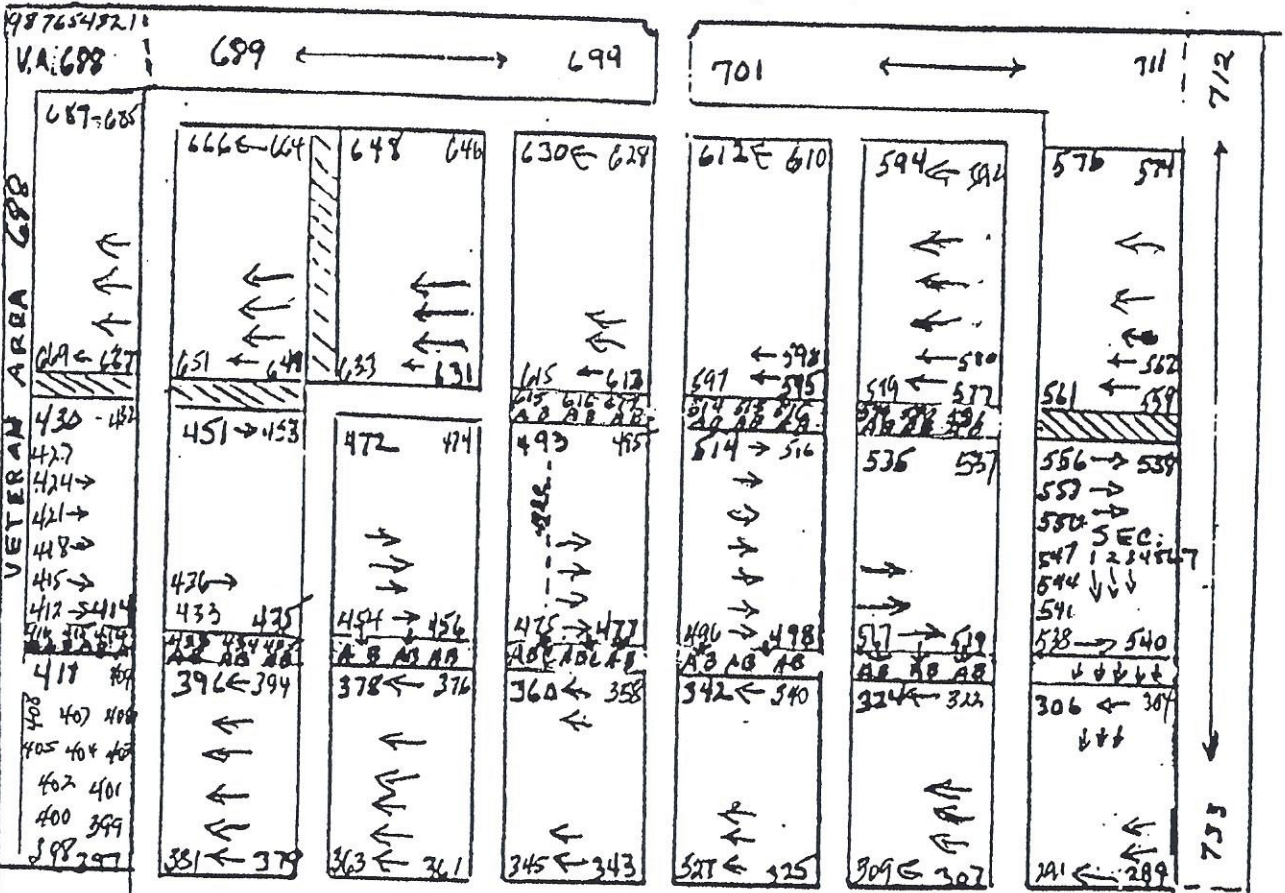
Set 3/4" Copied Pipe  
 520.51' W 23.44'

Set 3/4" Copied Pipe  
 520.51' W 23.44'

Set 3/4" Copied Pipe  
 520.51' W 23.44'

← FULWEILER

TE AVENUE →



← NEVADA STREET →

VETERAN AREA

AMASONIC AREA

OLD AUBURN CEMETERY

← CHAMBERLIN AVENUE →

FULWEILER GATE OPEN 8:00 A.M. TO SUNSET

OLD COUNTY